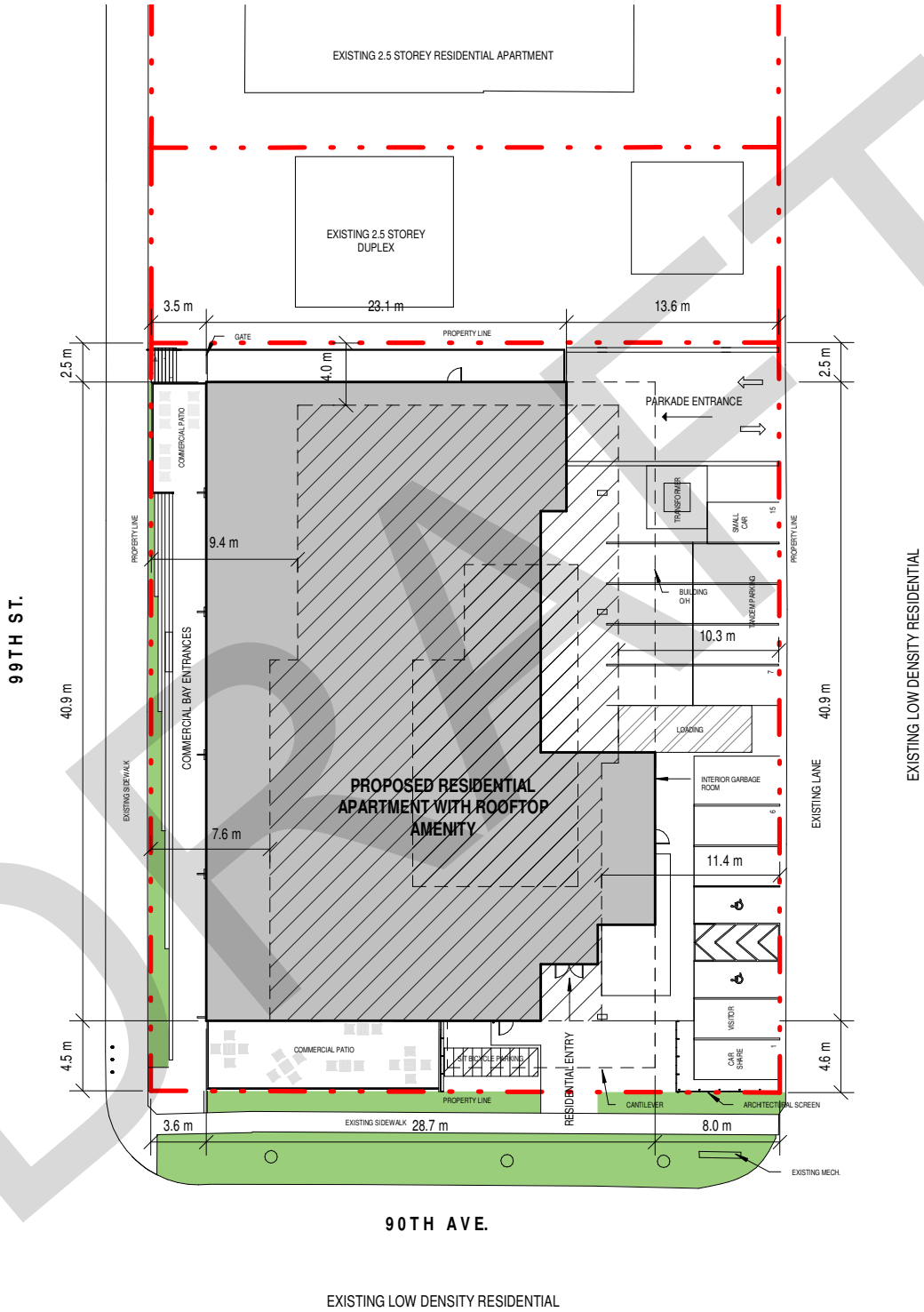
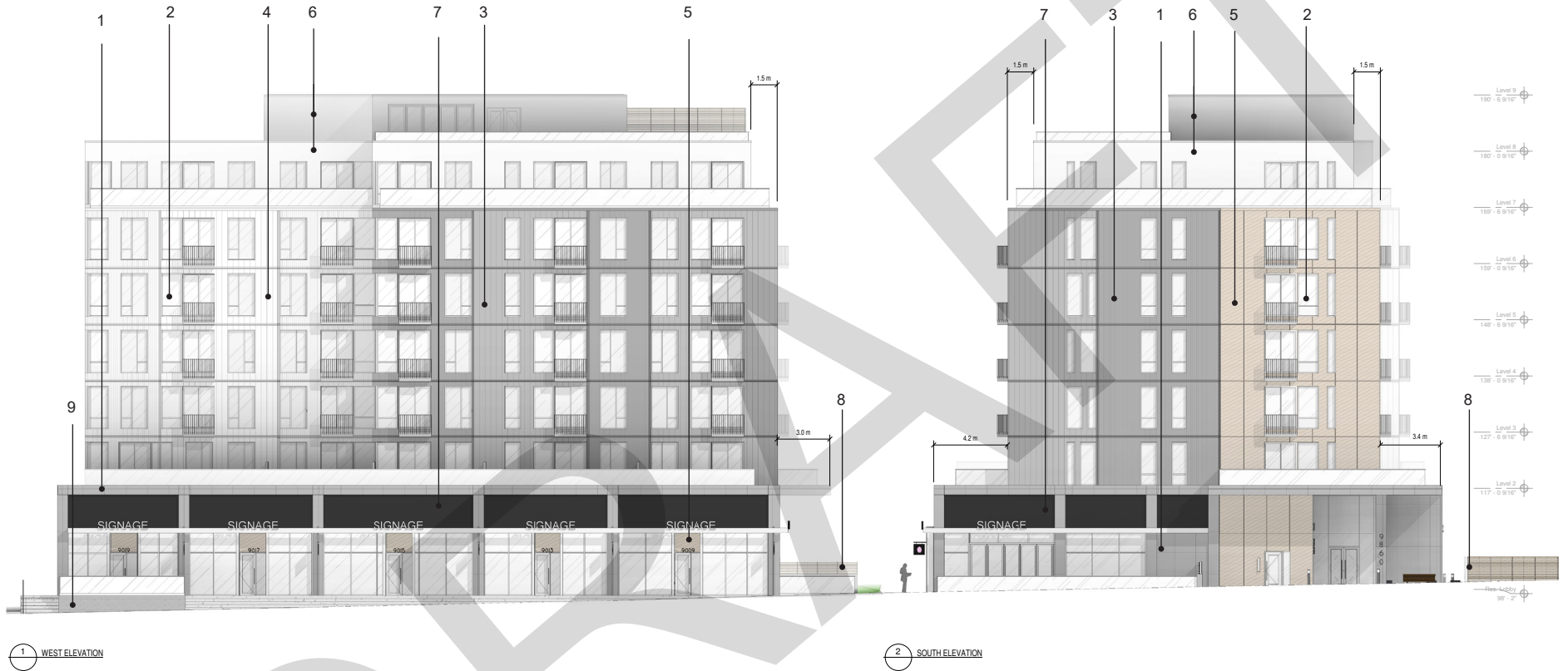


APPENDIX: Site Plan



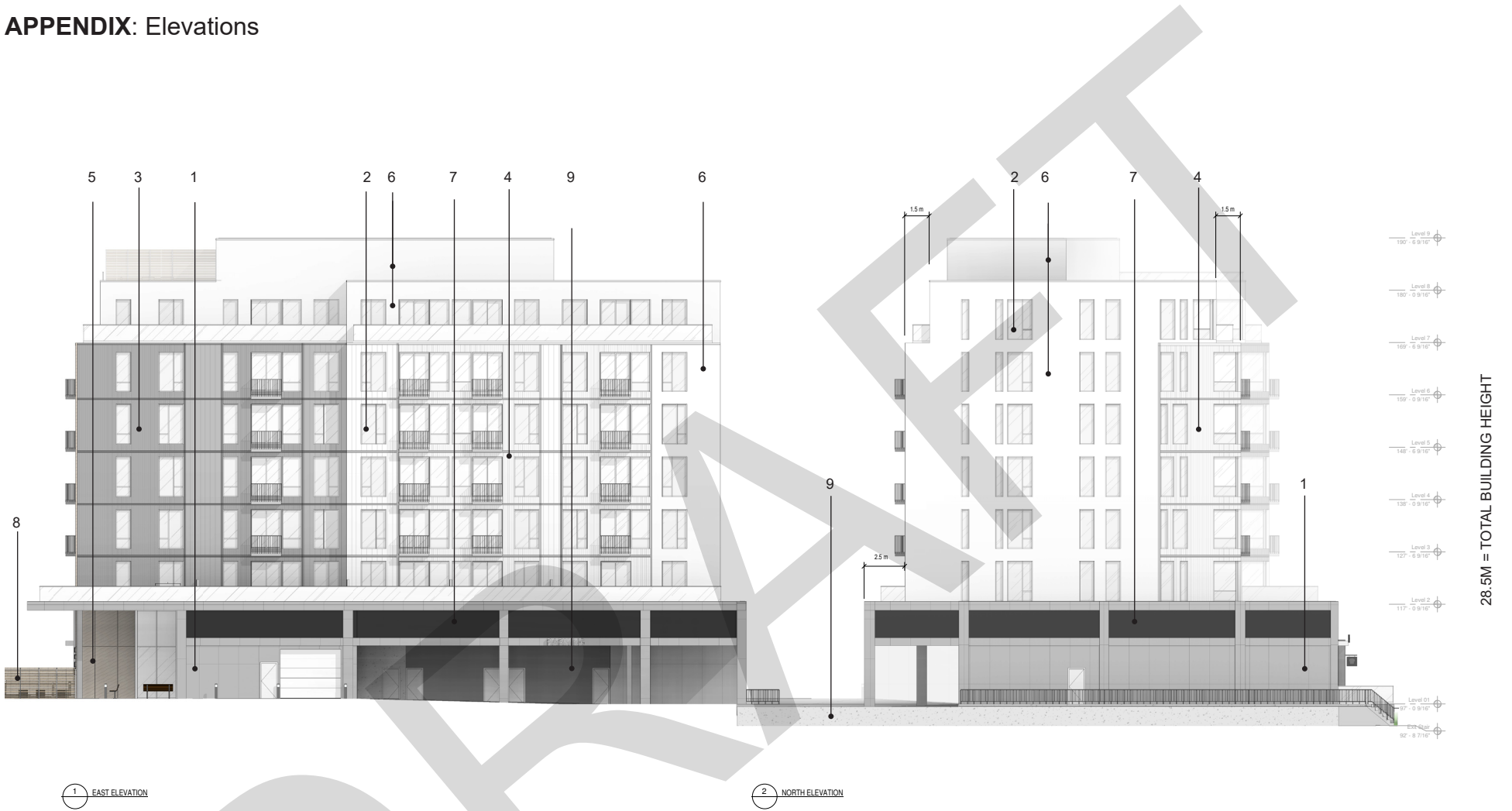
APPENDIX: Elevations



28.5M = TOTAL BUILDING HEIGHT

- 1. Cementitious/Architectural Cladding - Gray
- 2. Glazing
- 3. Architectural Cladding - Gray
- 4. Architectural Cladding - White /Light Gray
- 5. Woodgrain Cladding
- 6. Stucco - White
- 7. Cementitious/Architectural Cladding - Dark Grey
- 8. Architectural Screen
- 9. Concrete

APPENDIX: Elevations



- 1. Cementitious/Architectural Cladding - Gray
- 2. Glazing
- 3. Architectural Cladding - Gray
- 4. Architectural Cladding - White /Light Gray
- 5. Woodgrain Cladding
- 6. Stucco - White
- 7. Cementitious/Architectural Cladding - Dark Grey
- 8. Architectural Screen
- 9. Concrete