

# CONSTRUCTION NOTICE

Manhole Construction - Saskatchewan Drive and Gateway Boulevard

**SEPTEMBER 2021**

## PROJECT OVERVIEW

EPCOR is responsible for the maintenance of the main sewer lines in Edmonton and associated infrastructure. A manhole on Saskatchewan Drive and Gateway Boulevard has deteriorated and needs to be replaced. The new manhole will also provide access to drainage infrastructure for future inspections.

## WHAT'S HAPPENING

The work involves construction of a shaft with a drill rig. A crane will be used to remove soil as the shaft is dug. Loaders and tandem trucks will also be utilized on site.

As construction progresses, a bypass is tentatively scheduled for approximately 30 days in mid-November 2021 to mid-December 2021, and then again for approximately 10 days in January 2022. A bypass takes flows from the below ground drainage system, brings them above ground in a pipe to discharge the flow into a manhole away from the work area. Bypasses are monitored 24 hours a day, 7 days a week, to ensure the safety of the public. The pump for the bypass will generate continual, low decibel noise.

Residents may experience odour, dust and general noise as a number of construction equipment and trucks will be used for material delivery, excavation, manhole installation, soil removal and surface restoration.

## TREE REMOVAL

In advance of the work to construct the manhole, a tree south of Saskatchewan Drive and east of Gateway Boulevard will be removed in accordance to the City of Edmonton's Corporate Tree Management Policy C456C. The tree has been identified as conflicting with the alignment of the manhole.

The removal of the tree will occur within the next week. Please see the map on the next page for the location of the tree.

Once the construction is complete, the City of Edmonton will replace the original tree. All inquiries regarding the tree can be directed to the City of Edmonton at 311.

## SCHEDULE

The construction is scheduled to begin in **mid-October 2021** and is expected to be completed by the **end of February 2022**. *These timelines are estimates and may change based on weather and construction conditions.*

The typical hours of construction will be **7:00am - 9:00pm Monday to Saturday**. If required, these hours may be extended, and construction may occur on Sundays from 9:00am to 7:00pm.

All affected landscaping, pavements and sidewalks will be restored to their original condition. Restorations are anticipated to be completed in spring 2022.

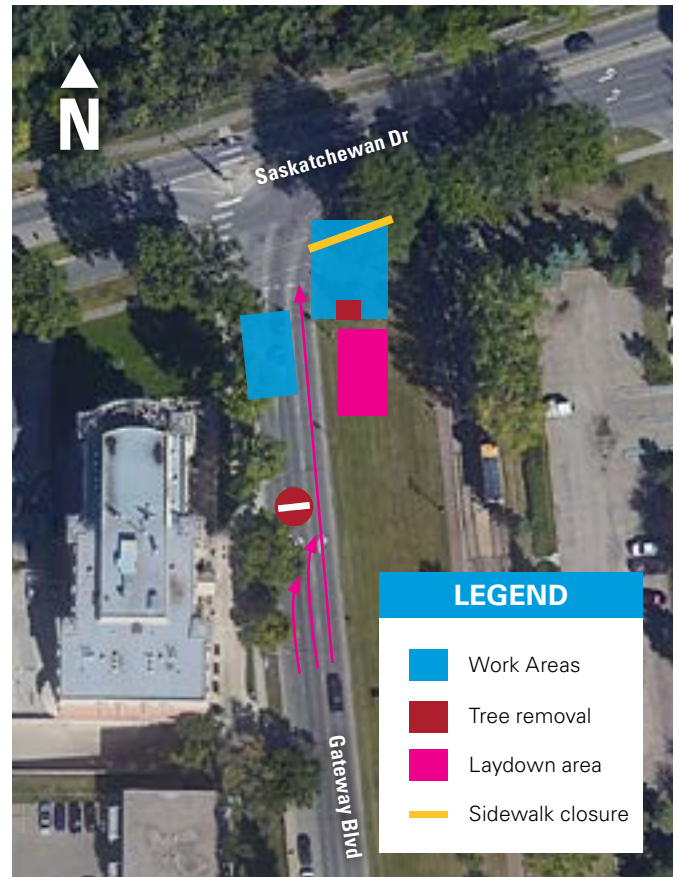
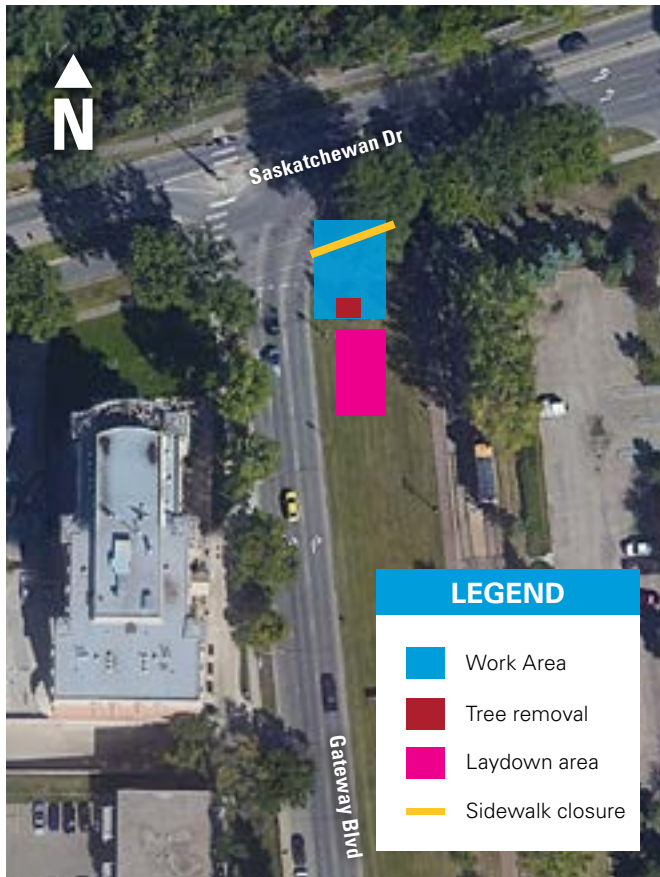
EPCOR will do everything possible to manage noise associated with the construction and bypass. We will work to ensure that the construction is completed within the requirements of the City of Edmonton Noise Bylaw.

## SAFETY

The construction area will be fenced and marked as a restricted area. We will take every precaution to ensure public safety, and we request your assistance in keeping children and pets a safe distance from the construction site and the equipment.

We thank you for your patience and understanding as we perform this necessary work.

## MAP OF WORK AREA



## TRAFFIC IMPACTS

**During construction between mid-October 2021 to the end of February 2022, residents can expect:**

- The sidewalk south of Saskatchewan Drive will be closed. Pedestrians will be detoured to the north sidewalk.
- The bypasses will be ramped on Saskatchewan Drive and Queen Elizabeth Park Road to maintain traffic flow, however, traffic will be slowed down by the ramps.

## TRAFFIC IMPACTS

**During drilling, for one day on October 14, 2021, residents can expect:**

- The left and centre northbound lanes on Gateway Boulevard, south of Saskatchewan Drive, will be closed for 20 meters. The right lane will remain open to accommodate traffic.



## MORE INFORMATION

**EPCOR Drainage Services**

**Phone:** (780) 509-8080

**E-mail:** [EPCORdrainage@epcor.com](mailto:EPCORdrainage@epcor.com)