

# CONSTRUCTION UPDATE

## Manhole Construction - Saskatchewan Drive and Gateway Boulevard

**JUNE 2022**

### PROJECT OVERVIEW

EPCOR is responsible for the maintenance of the main sewer lines in Edmonton and associated infrastructure. A drainage manhole on Saskatchewan Drive and Gateway Boulevard has deteriorated and is currently being replaced.

### WHAT'S HAPPENING

Since October 2021, EPCOR has been completing the manhole replacement which involves the construction of a large shaft.

An above-ground bypass was installed in May 2022. A bypass takes flows from the below ground drainage system, brings them above ground in a pipe to discharge flows into a manhole away from the work area, so the remaining construction activities can be completed safely.

Due to unexpected infrastructure condition, an additional bypass needs to be installed at the intersection of Saskatchewan Drive and Gateway Boulevard.

The additional bypass will be trenched into the road and covered with steel plates to minimize traffic impacts. To complete the installation of the new bypass, **Gateway Boulevard will be closed from 86 Avenue to Saskatchewan Drive overnight for three nights.**

Once the overnight work is completed, the construction activities will again be limited to the existing fenced work site on the east side of Gateway Boulevard during typical hours of construction.

### IMPACTS

#### Noise

We expect there to be **significant noise during the overnight work** as crews will be cutting and breaking up pavement to trench the bypass.

The bypasses will operate 24 hours a day and will be monitored continuously. The pumps for the bypasses will generate continual, low decibel noise.

Once the additional bypass is installed and construction activities are limited to the existing fenced work site, residents will experience general noise associated with regular construction activities.

EPCOR will do everything possible to manage noise associated with the construction and bypass. We will take measures to ensure compliance with the City of Edmonton's Community Standards Bylaw for Noise Control.

#### Odours

Increased sewer odours will be present while the bypass activities are underway. Bypasses alter and agitate the flow of sanitary water and can cause increased sewer odours in the area.

### SCHEDULE

Construction of the new manhole and the associated bypass activities are now expected to be complete by **early September 2022.**

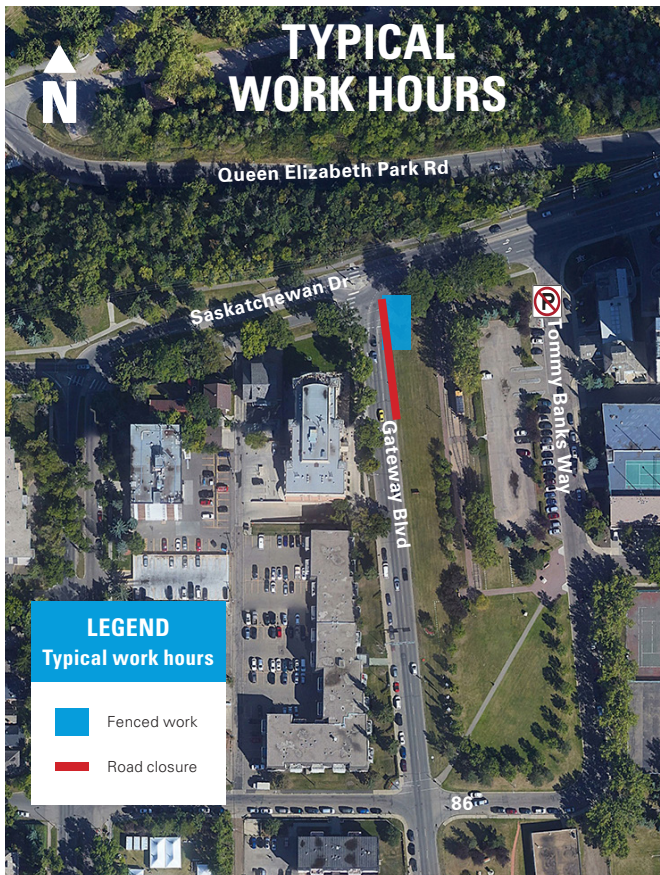
*Please note, timelines are estimates and may change based on weather, material procurement and construction conditions.*

**The typical hours of construction will be 7:00am - 9:00pm Monday to Saturday.** If required, these hours may be extended, and construction may occur on Sundays from 9:00am to 7:00pm.

**The overnight work will occur from 10:00pm to 6:00am on June 27, 28 and 29.**

All affected landscaping, pavements and sidewalks will be restored to their original condition. Restorations are anticipated to be completed in fall 2022.

## WORK AREA AND TRAFFIC IMPACTS



## TRAFFIC IMPACTS

### During the typical construction hours/activities:

- The right lane on Gateway Boulevard, just south of Saskatchewan Drive, is closed for approximately 20 metres. Two lanes of northbound traffic will remain open for the duration of the work, with the exception of the overnight work on June 27, 28 and 29.
- Pedestrian safety signage and wooden ramps are placed on the sidewalks over the bypass hose.
- Three parking stalls along Tommy Banks Way are restricted.
- Three parking stalls in the Queen Elizabeth Park parking lot are restricted.
- The existing bypass hose is trenched and covered with steel plates in eastbound and westbound lanes on Saskatchewan Drive and on both lanes on Queen Elizabeth Park Road to maintain traffic flow.

## TRAFFIC IMPACTS

### June 27, 28 and 29 from 10:00pm to 6:00pm for installation of the additional bypass, there will be the following traffic impacts in addition to those outlined for the typical construction hours/activities:

- Gateway Boulevard will be closed between 86 Avenue and Saskatchewan Drive.
- Traffic will be detoured to Tommy Banks Way where eastbound Saskatchewan Drive can be accessed.
- Gateway Boulevard will reopen, with the exception of the right lane, by 6:00am each morning. After 6:00am on June 30, the overnight work will be complete and the two lanes of Gateway Boulevard will remain open.
- The additional bypass to be installed will be trenched and covered with steel plates across Gateway Boulevard at the intersection of Saskatchewan Drive to maintain traffic flow for the duration of the project.

## SAFETY

The construction and bypass areas will be fenced and/or marked as restricted areas. We will take every precaution to ensure public safety, and we request your assistance in keeping children and pets a safe distance from the construction site and the equipment.

## MORE INFORMATION

### EPCOR Drainage Services

Phone: 780-509-8080

Email: [EPCORdrainage@epcor.com](mailto:EPCORdrainage@epcor.com)

