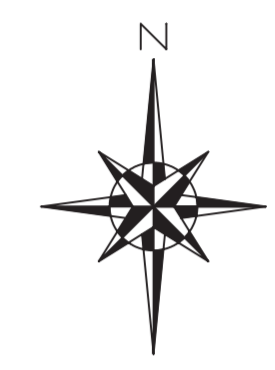


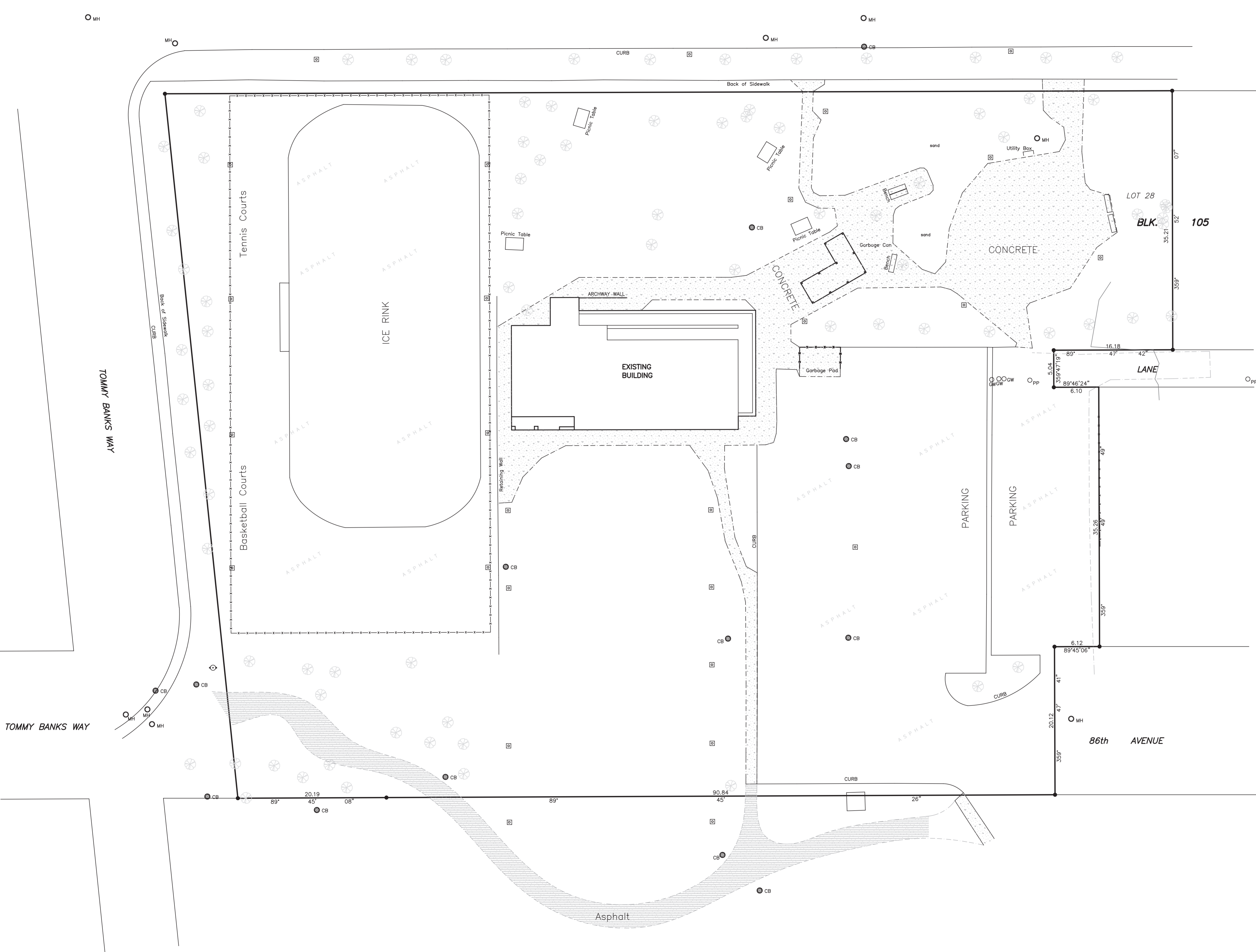
87th AVENUE

**PLAN**  
 SHOWING TOPOGRAPHIC SURVEY OF  
 LOT 1A, BLK.105, PLAN 852 1569  
 RIVER LOT 13 OF THE EDMONTON SETTLEMENT  
 (SEC.13, TWP.52, RGE.24, W.4 M.)  
 EDMONTON ALBERTA

SCALE 1:250 2009 D.J. HAGEN, A.L.S.  
 10m 0 10 20m



- LEGEND**
- DISTANCES ARE IN METRES AND DECIMALS THEREOF.
  - ELEVATIONS ARE IN METRES AND DECIMALS THEREOF.
  - AREA DEALT WITH BOUNDED THUS
  - STATUTORY IRON POSTS FOUND SHOWN THUS
  - FENCE SHOWN THUS
  - MANHOLES SHOWN THUS  MH
  - FIRE HYDRANT SHOWN THUS
  - CATCH BASIN SHOWN THUS  CB
  - POWER POLE SHOWN THUS  PP
  - LIGHT STANDARD SHOWN THUS
  - ELEVATIONS ARE GEODETIC AND ARE DERIVED FROM ASCM 62505 (ELEV=669.906m)
  - DATE OF SURVEY: NOVEMBER 23 & 24, 2009
  - WHERE APPLICABLE REGISTERED EASEMENTS AND UTILITY RIGHTS OF WAY AFFECTING EXTENT OF PROPERTY HAVE BEEN SHOWN ON THE PLAN.
  - TREES SHOWN THUS
  - CHOR SHOWN THUS



<b>HAGEN SURVEYS (1982) LTD.</b>	
8929-20th STREET EDMONTON T6P1K8 Ph:464-5506	
SURVEYOR'S STAMP	DRAWN BY: G.C.
	CALC'D. BY: G.C.
	CHECKED BY: R.A.M.
	FILE NO. 09C1013