

PROJECT UPDATE

Mill Creek Trunk Rehabilitation Project

JULY 2024

PROJECT OVERVIEW

The Mill Creek Combined Sewer Trunk line conveys wastewater from south Edmonton to the Gold Bar Wastewater Treatment Plant, and also conveys rainwater and snowmelt from some of Edmonton’s older south side neighborhoods. This line services approximately 58,000 customers in south Edmonton.

In 2020, crews identified large holes in the trunk, resulting in an emergency repair in Mill Creek Ravine. Further inspections were completed to evaluate the remainder of the trunk’s condition. Due to the poor condition and location of the line, a replacement trunk is needed to ensure the system continues to reliably meet the needs of the City of Edmonton. The new trunk will also reduce impacts to Mill Creek Ravine. Once the new trunk has been constructed, a portion of the existing trunk in Mill Creek Ravine will be decommissioned.

This project is broken down into three stages of work.

Stage One

March 2023 to Summer 2025

- New tunnel construction along 97 Street and connection to the existing upstream combined trunk at 80 Avenue and downstream trunk at 88 Avenue.

Stage Two

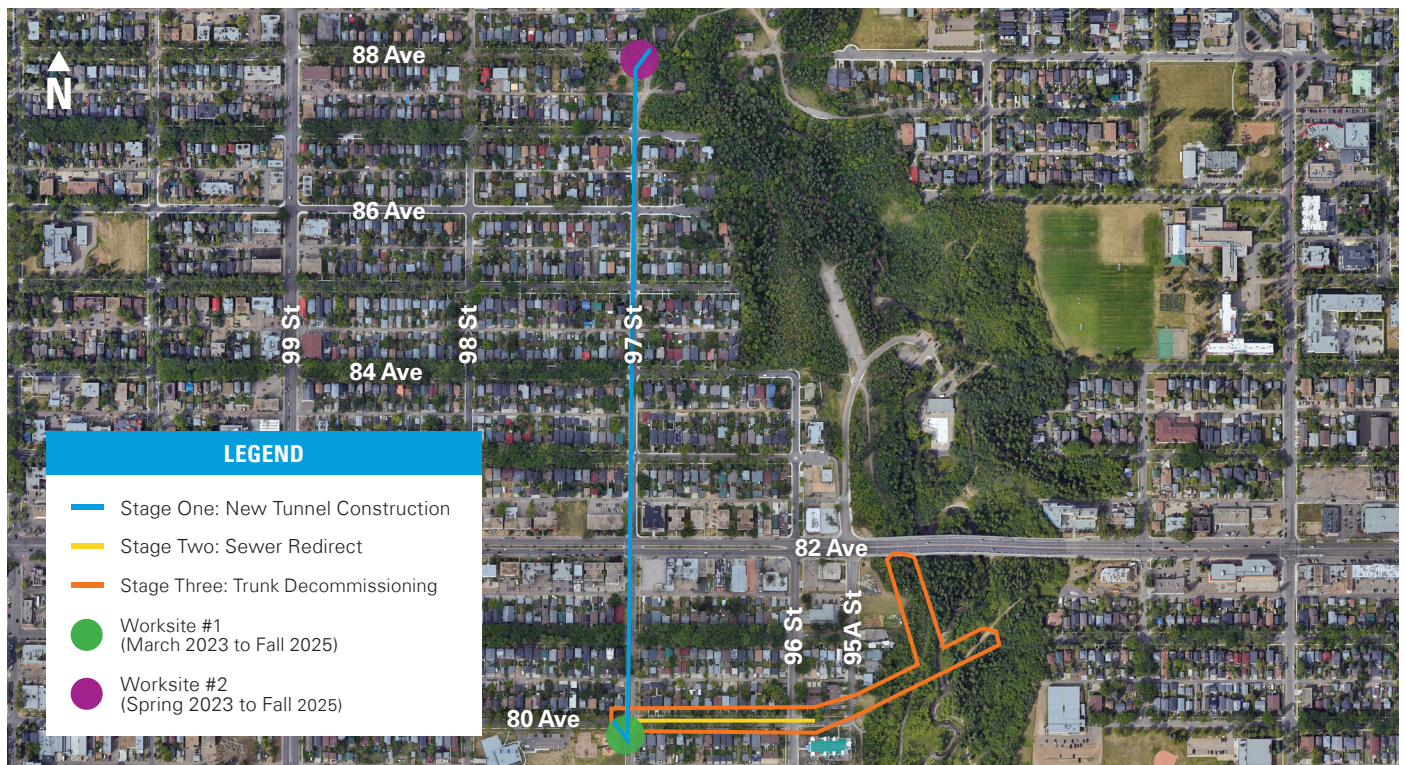
Spring 2025 to Fall 2025

- Redirecting the existing sewer flows on 80 Avenue between 96 Street to 97 Street toward the new tunnel.

Stage Three

Summer 2025 to Spring 2026

- Decommissioning the existing combined trunk from 97 Street to the Mill Creek Ravine.



Further notification will be provided at each stage before work begins and will include details of traffic impacts, timelines and schedule when possible.

Please note, these timelines are estimates and are pending approvals, material procurement/availability, construction conditions and weather.

PROGRESS UPDATE

Worksite #1 (Mill Creek School)

Crews began tunneling work at Worksite #1 on **March 27, 2024** and the tunnel boring machine was retrieved from Worksite #2 on **June 19, 2024** travelling a total of 843 meters underground. Now that the tunneling is complete, crews will be decommissioning the slurry separator and other heavy equipment used during tunneling work and the 24/7 working hours are no longer be required.

During the next stage of work, The TBM working shaft at will be converted into a manhole and connected to the new tunnel. The manhole will provide access for future maintenance of the tunnel.

Once Stage One construction is complete, Worksite #1 will be used as a laydown site to complete Stage Two work. It is anticipated that the existing site footprint at Worksite #1 can be reduced after Stage One construction is complete.

Residents may experience dust, odour, and general noise as a number of construction equipment and vehicles will be used for material delivery, excavation, soil removal and surface restoration.

Before construction for Stage Two begins, more detailed information, including traffic impacts and timelines, will be distributed.

Worksite #2 (Tubby Bateman Park)

During the next stage of work, The TBM retrieval shaft at will be converted into a manhole and connected to the new tunnel. The manhole will provide access for future maintenance of the tunnel.

Once the manhole construction is complete, road surfaces and grass areas will be restored to their original condition and crews will demobilize from site.

SCHEDULE

Manhole construction at Worksite #1 is expected to take **eight months** to complete. Once the construction of the manhole is complete, crews will begin preparing for Stage Two construction.

Manhole construction at Worksite #2 is expected to take **five months** to complete. It is anticipated that landscaping restoration will be completed at Tubby Bateman Park in **summer 2025**.

Please note, these timelines are estimates and are pending approvals, material procurement/availability, construction conditions and weather.

HOURS OF OPERATION

The requirement for 24/7 work to complete the tunneling has ended and regular working hours have resumed on site.

Typical hours of construction will be from **7:00 a.m. to 7:00 p.m., Monday to Saturday**. If required, these hours may be extended and construction may occur on Sundays from 9:00am to 5:00pm.

EPCOR will do everything possible to manage noise associated with the construction. We will work to ensure that construction is completed within the requirements of the City of Edmonton Noise Bylaw.

STAYING CONNECTED

EPCOR is committed to staying connected with you throughout the project. As different stages take place, community members will receive construction notices and project updates, and information will be available on the website.

As the project progresses, further notification will be provided to residents adjacent to the work sites before work begins and will include details on traffic impacts, timelines and schedule.

MORE INFORMATION

EPCOR Projects

Phone: (780) 412-4200

E-mail: epcorprojects@epcor.com

Website: epcor.com/millcreek